



Turf Lock, Mildenhall, looking downstream, 1914



Repair work on the Lark, Mildenhall c. 1889
(Photo O. Jarman Esq.)

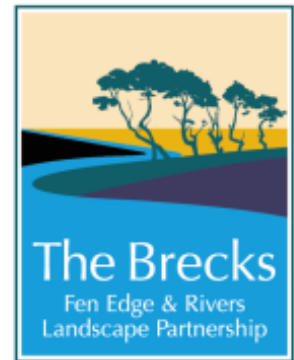
Tales from Mildenhall's river: a guided river history walk, Thursday 14 September

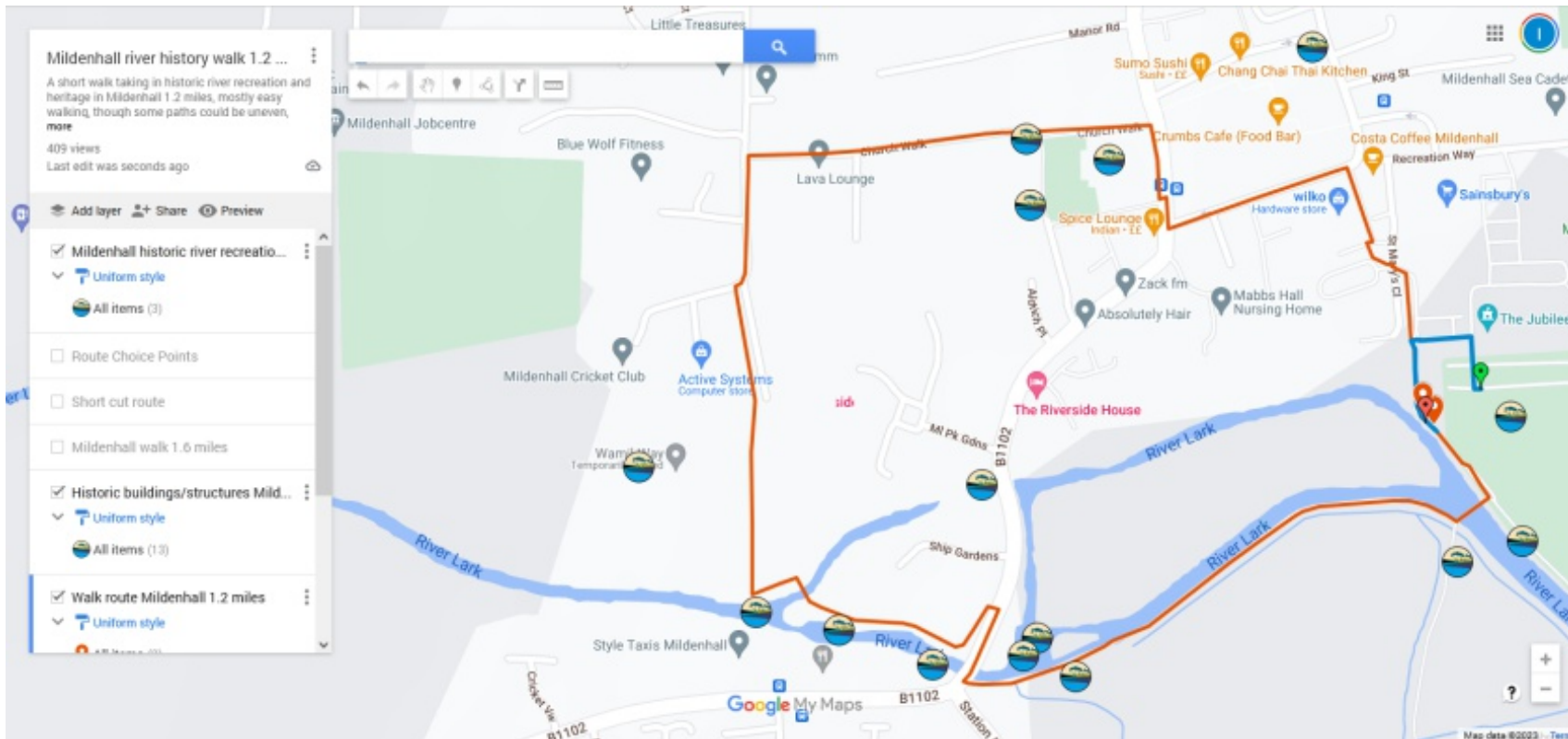


Town Bridge, Mildenhall, looking towards gasworks

First of a series of history walks in the Brecks, run by The Brecks Fen Edge and Rivers Landscape Partnership Scheme @TheBrecksLP supported by @HeritageFundUK, guided by @OSBrecks volunteers

Contact: Imogen Radford,
imogen36@googlemail.com
or bfer.admin@suffolk.gov.uk





See the route on a map, where you can click on the icons to see information about the historic spots:

<https://tinyurl.com/GoogMildWalk>

or point to the QR code with a smartphone camera



Google map of our route

More information: History of Mildenhall, <https://mildenhallmuseum.co.uk/mildenhall/>
 River Lark navigation, <http://www.stedmundsburychronicle.co.uk/riverlark/larkinintro.htm>
 More links from the icons on the Google map – see above.

You could do an extended walk, down to the Wamil stone and back along Wamil Walk. Or make a longer walk by following the riverside path in either direction -----

Look at old ordnance survey maps of the area on the National Libraries of Scotland website, for example 1913 side-by-side with modern satellite map: <https://tinyurl.com/MildNLSoldmap>

